

# Court Fields School

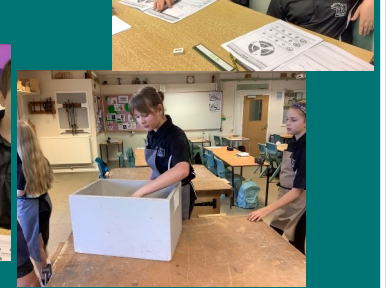
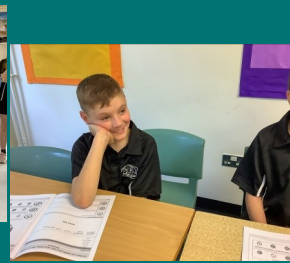
## Parent Weekly 'What's Happening' Bulletin



### Message from Mrs Matthews

Friday 15th September 2023

No space for me today, as we've got loads of fantastic photos from our first full week of this school year. Can I just say thank you for your support, particularly in ensuring that your child's uniform has been immaculate, including the new skirts, which Year 11 tell me they actually really like! Have a lovely weekend. Best wishes, Mrs Matthews



### Back to school

We had a brilliant start to the Autumn Term last week! Here are a few pictures of our new Year 7s settling in. Keep an eye on the Wellington Weekly News for a full write up!



### Save the Date!

Our Year 11 Curriculum Evening will be taking place on 4th October 2023, 6-8pm. This will include information on how to support your child through Year 11 and their GCSE exams, with presentations from the core subjects and talks by local Colleges. More information to follow in the coming weeks.



### PE Clubs Autumn Term

	Monday	Tuesday	Wednesday	Thursday	Friday
Lunchtime (1.35pm-2.05pm)	All Years Badminton (SH) BC	Yr 10 and Yr 11 Indoor Football (SH) MD	Yr 8 and 9 Indoor Football (SH) JC	Yr 7, 8 and 9 Girls Indoor Football (SH) BC/MC	
After School (3.15pm-4.15pm)	All Years Badminton (SH) DG	All Years Girls Football (FIELD) BC/MC	Yr 7 and 8 Rugby (FIELD) RS	Yr 7 Indoor Football (SH) RS	

\*\*\*All clubs above are for both boys and girls (unless specified)\*\*\*

### Art & Photography GCSE Coursework

We are inviting Year 11 GCSE Art/ Photography students back to work on coursework during open evening, next week. This will be from 5.00-7.30pm on Wednesday 20<sup>th</sup> September. If your child is involved, they need to see Mrs Binmore or Miss West before next Wednesday.



### Bug Club

Bug Club is on every Monday and Friday lunchtime in B3, open to all year groups. Please note. Students will need to eat lunch first as there is no

eating or drinking in the science labs.

Look out for a full updated list of extra-curricular activities coming soon!



Achieve | Belong | Participate



## Reminder!

Next Wednesday 20th September we will be finishing school early at 1.30pm. This is to allow us to set up for our Open Evening (more details, right). School will also start late on Thursday 21st, at 9:10am.

## BE THERE

OPEN EVENING

### Court Fields Open Events

Our Open Evening for 2024 starters is taking

place next Wednesday 20th September, 5:30-8pm. We have several Open Mornings on 28th-29th September and 2nd-4th October. These mornings are by appointment only and are bookable now. To secure your place, please email [schooloffice@courtfields.bep.ac](mailto:schooloffice@courtfields.bep.ac) or call the school office on 01823 664201. We look forward to seeing you then!

### Useful information

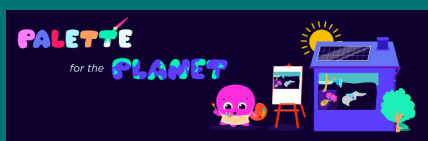
Supporting a Child with ADHD  
2 hour online session



FACE Lead Facilitator, Jane Keyworth is delivering this session on 28th September 2023 from 6:30pm to 8:30pm  
Book Now Online via [facefamilyadvice.co.uk](http://facefamilyadvice.co.uk)

### Competition time for Art!

The Grantham Climate Art Prize competition, is being run by Octopus Energy and is designed to continue to raise awareness of the climate crisis in our world. Head to [octopus.energy/grantham-art-prize-2023](http://octopus.energy/grantham-art-prize-2023) for more information. This will be publicized in lessons and students are more than welcome to come along to Art Club on a Monday lunch time to share ideas/ use resources/ have their work checked.



### Job opportunity



We are now recruiting Full Time and Part Time Teaching Assistants to work with our learners at The Cove in Wellington. The Cove is a specialist provision delivered by Selworthy staff in partnership with Court Fields School. This is an exciting educational project that celebrates inclusion and offers learners the very best of a specialist and mainstream curriculum. Selworthy School is part of the Oak Partnership Trust and the role may involve working across our partner schools in the future.

- Are you passionate about improving outcomes for children and young people with SEND?
- Do you have compassion and empathy?
- Are you creative and resilient?
- Do you have what it takes to make a difference?

We are looking for enthusiastic and resilient people who can demonstrate they are flexible, patient and kind, who will fit in with our skilled and hardworking staff team. The ability to think on your feet and cope well, in sometimes, challenging situations is a must. We can promise variety and innovative learning experiences.

If you would like to be part of a supportive school community, who are dedicated to ensuring continuous improvement for all we would love to hear from you.

Hours: 32.5 hours per week, term time only plus inset days (39 working weeks, 44.666 paid weeks)  
6.30 am - 3.30pm Monday to Friday  
Salary: Grade 14 - £10.98 per hour (£15,993 pro rata)  
Employer Pension Contribution 24.4%

For further information and an application form please go to: [oak.education](http://oak.education) or call 01823 284970.

Closing Date: Friday 30th September 2023



### Incorrect Uniform

Please note that if students come to school in incorrect uniform, they will be given the correct uniform to borrow for the day. We will need to swap this for a personal belonging that will be given back at the end of the day, once the uniform is returned. Thank you for your cooperation.



### Entering and leaving school

With more students in our school than ever, the start and end of the school day is extremely busy, with pedestrians, bikes and cars/buses. Please take extra care when moving around school, especially when entering and leaving the site.

### Pantomime Trip

Watch out for an invite to come to the pantomime in Bristol. Letters will be coming out to Year 7 first and there will be limited places, so act fast! Cryptic clue as to what you will be seeing: 'Nana, the unusual babysitter couldn't keep their feet on the ground'. House point for the first 10 people who come to Mrs Binmore with the right answer!



### PATHWAYS EVENING FOR PARENTS & CARERS



BRIDGWATER CAMPUS  
Thursday 21 September, 6pm - 7.30pm

Scan to register!



TAUNTON CAMPUS  
Wednesday 27 September, 6pm - 7.30pm

Scan to register!



BRINGING OUT YOUR BEST | [www.btc.ac.uk](https://www.btc.ac.uk) | [fb](https://www.facebook.com/btc.ac.uk) | [ig](https://www.instagram.com/btc.ac.uk) | [li](https://www.linkedin.com/company/btc.ac.uk)

### Bridgewater & Taunton College Events

These events will outline the various pathways available, their unique benefits, and the exciting opportunities on offer. You will learn how they align with your young person's interests, skills, and career aspirations. We'll have a team of staff available to answer questions relating

to A Levels, T Levels, the International Baccalaureate, vocational courses and Apprenticeships. To sign up, scan the relevant QR code, go to our website at [www.btc.ac.uk](http://www.btc.ac.uk), or call Information & Advice on 01278 441234

### DIARY DATES

#### 20th September

Early finish 1.30pm due to Open Evening 5.30-8pm

#### 21st September

Late Start 9.10am

#### 25-27th September

Year 7 Residential

#### 28-29th September

Open Morning

#### 2nd-4th October

Open Morning

#### 4th October

Year 11 Curriculum Evening 6-8pm

#### 19th October

Year 11 Parent's Evening

#### 20th October

Inset Day

#### 23-27th October

Half Term

#### 30th October

Inset Day

Achieve | Belong | Participate



@courtfieldsschool



@CourtFieldsSch



CourtFieldsSchool