

huish

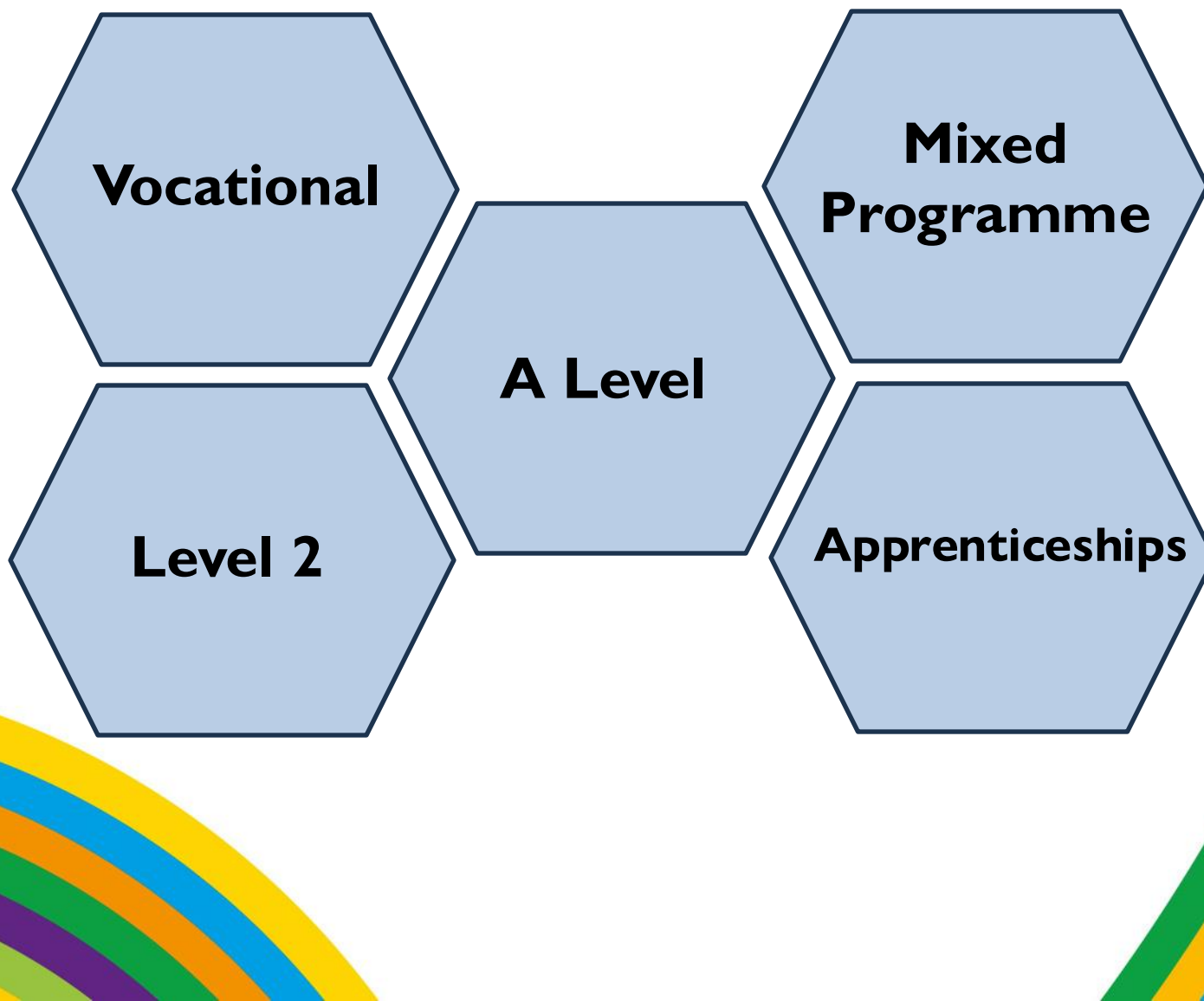
RICHARD HUISH COLLEGE



THE JOURNEY TO YOUR FUTURE



STUDY PROGRAMMES



HOW TO CREATE A STUDY PROGRAMME?

3 A Levels
or
2 A Levels and 1 Vocational
or
1 A Level and 2 Vocational
or
Extended Diploma
or
Apprenticeship

HOW TO CHOOSE?

Let the career plan emerge from the subject choices

Consider

Strengths and Enjoyment

Exams or Coursework

Add an AS or Enrichment?

WHERE TO LOOK?

Open Events

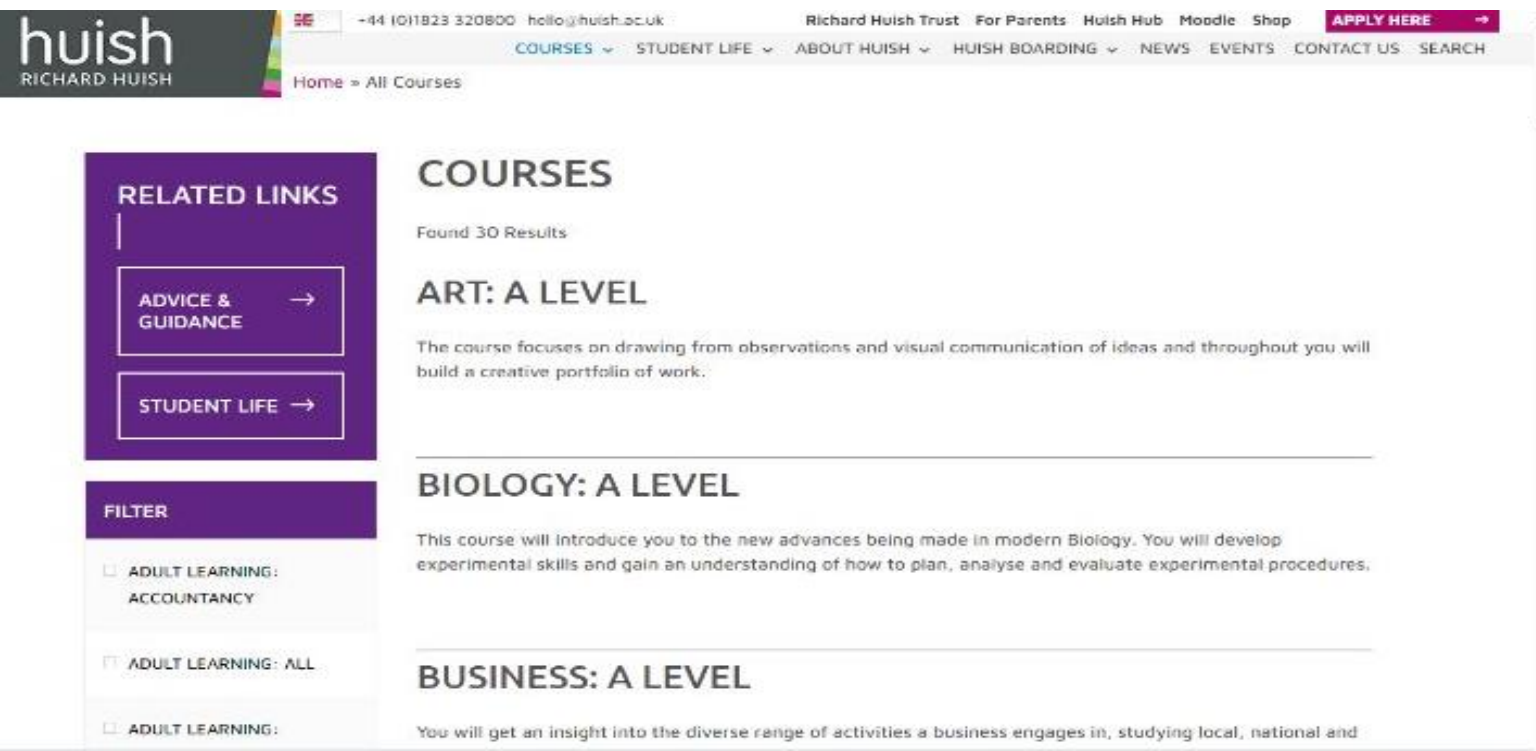
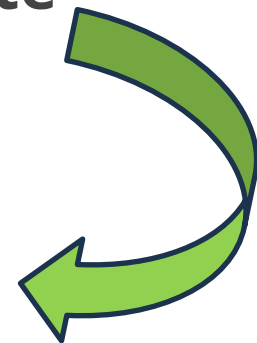
Experience Days

Assemblies

Advice and Guidance

Huish Website

www.huish.ac.uk



The screenshot shows the Huish Richard Huish College website. The header includes the college logo, contact information (+44 (0)1823 320800, hello@huish.ac.uk), and navigation links (Richard Huish Trust, For Parents, Huish Hub, Moodle, Shop, APPLY HERE). The main content area is titled 'COURSES' and shows 'Found 30 Results'. The first course listed is 'ART: A LEVEL', followed by 'BIOLOGY: A LEVEL', and 'BUSINESS: A LEVEL'. A sidebar on the left contains 'RELATED LINKS' (ADVICE & GUIDANCE, STUDENT LIFE) and a 'FILTER' section with checkboxes for 'ADULT LEARNING: ACCOUNTANCY', 'ADULT LEARNING: ALL', and 'ADULT LEARNING:'.

ENTRY REQUIREMENTS

For Level 3 courses, they will need five GCSEs* at grade 9-4 including Mathematics and English Language

***For a BTEC Extended Diploma, a Vocational Level 2 qualification at a grade merit or above can be accepted in place of one GCSE**

SOME SUBJECTS HAVE EXTRA ENTRY REQUIREMENTS
E.g., Biology requires a 6 in Biology, Mathematics and in English Language

The higher the grades, the more choices available, now and in the future.

EXAM RESULTS



Huish celebrates best results in the history of the college!



Coming to Huish allows you to achieve more than you thought possible!



EXAM RESULTS

99%

pass rate at A Level

80%

Distinction* and Distinction in
Full time vocational courses

D*D*D* - DMM

84%

A* - C grades

National Average – 76%

68%

Distinction* and Distinction in
single vocational courses

D* - D

EXAM RESULTS

We are in the
Top 8% in the Country for Student Progress

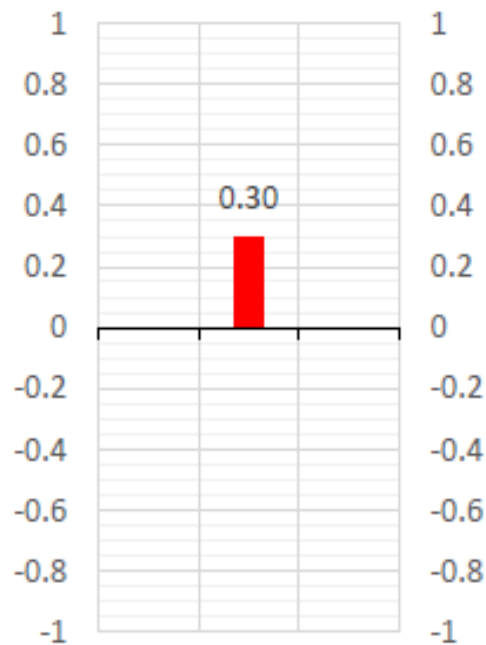
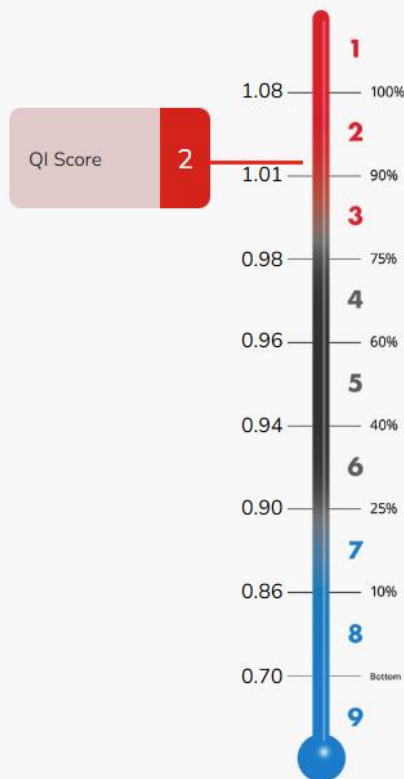
This is called Value Added and it measures how much students have improved from their starting point in comparison to other students of a similar ability

Students make great progress with us because of the opportunities and support we provide for them along the way

A Level Student Progress

Top 8%

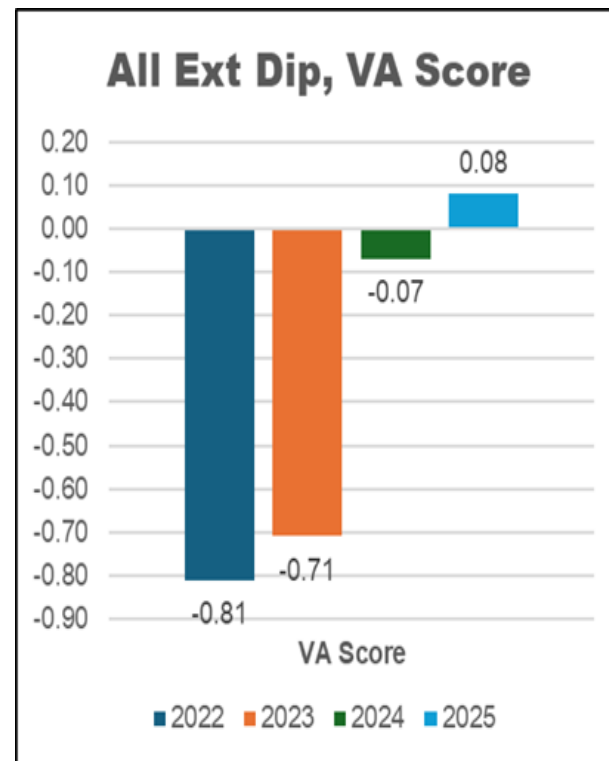
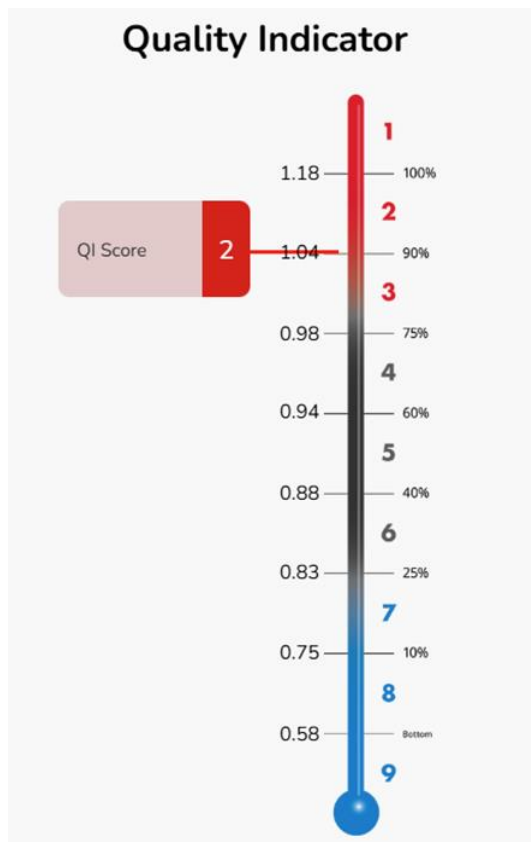
Quality Indicator



All
Grades per Completer

Vocational Student Progress

Top 8%



Level 3 – Summer Results



Alex Hughes

A* A* A*

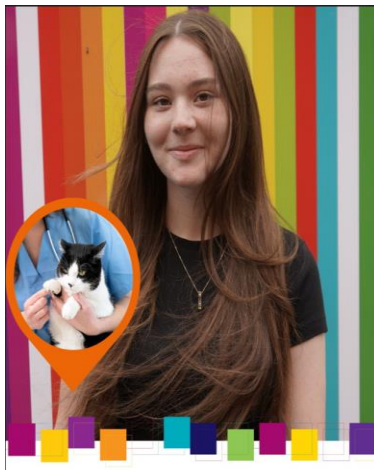
Gap Year and
then University
of
Bath (or Oxford!)



Henry Nicholas

A* A* A* A*

Mathematics at
Warwick



Courtney Young

D*D*D*

Veterinary Science at
Royal Veterinary
College - London



Esme Jolly

A* A* B

Level 7 Solicitor
Apprenticeship with
VWV Law Firm (Bristol)



**Millicent Morgan
Holloway**

D*D*D*

Music - Leeds
Conservatoire

Level 2 – Summer Results

	Grade 4+		
	2023	2024	2025
GCE English	61%	66%	70%
GCSE Maths	33%	36%	52%

	National post-16	Huish
English	21% (=)	70% (+4%)
Maths	17% (-0.3%)	52% (+16%)



FINANCE: TRANSPORT



Getting to Huish could be easier than you think!

All students can save up to 60% of their public transport costs with our travel contribution unless they are already supported by our discretionary bursary

We operate a free shuttlebus for all rail users, a park-and-ride scheme and have campus parking and bicycle racks

FINANCE: BURSARY

FINANCIAL SUPPORT

A decorative graphic on the left side of the slide consisting of several vertical lines of various colors (green, yellow, blue, red, purple) that curve and overlap at the bottom, resembling a stylized 'U' or a series of arches.

Financial support is available at Huish

For example:

Discretionary Bursary – available for those with a household income below £60,000 net per annum

Vulnerable Bursary – available to those who are in care, a care leaver, in receipt of Universal Credit in their own right, or in receipt of Employment Support Allowance and Personal Independence Payments

Free College Meals

A decorative graphic on the right side of the slide consisting of several curved lines of various colors (green, yellow, blue, red, purple) that sweep upwards from the bottom right corner.

Do what you love
choose what you study

Be yourself
meet your people

Express yourself!
No uniform

COLLEGE LIFE

Adult
environment
first names

Independence
shape your own
experience



COLLEGE LIFE

Example timetable

TIME	MONDAY	TUESDAY	WEDNESDAY	THURSDAY	FRIDAY
09.00 – 10.55		PSYCHOLOGY	BIOLOGY		ENGLISH LITERATURE
10.55 – 11.10	BREAK TIME				
11.10 – 12.40		ENGLISH LITERATURE		TUTORIAL	
12.40 – 13.35	LUNCH				
13.35 – 15.05	PSYCHOLOGY	BIOLOGY	SPORT ENRICH		BIOLOGY
15.05 – 15.10	BREAK TIME			BREAK TIME	(Lesson finishes 15.05)
15.10 – 16.40	ENGLISH LITERATURE			PSYCHOLOGY	

Dedicated Progress Tutor



HEALTH & WELLBEING



PROGRESSION



STUDY SKILLS



MONITORING & REFLECTION

Huish 30





STUDY SPACES



SOCIAL SPACE



EnRICHMENT



SOMERSET
COUNTY CRICKET CLUB



**BRISTOL
BEARS**

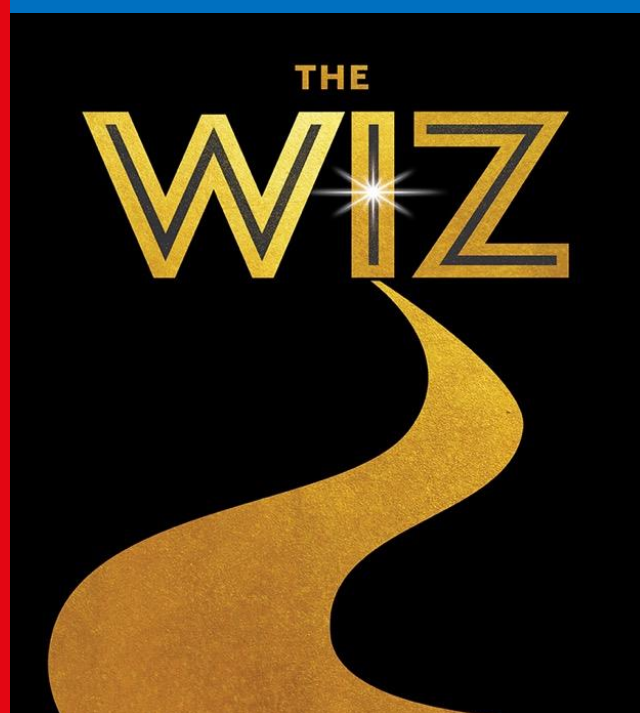
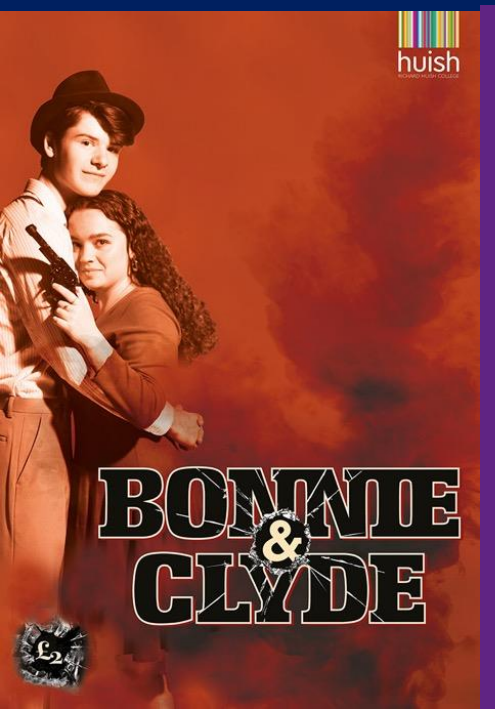


huish
TIGERS
Basketball

huish
TIGERS
FOOTBALL



ENRICHMENT



Performing Arts EnRICH



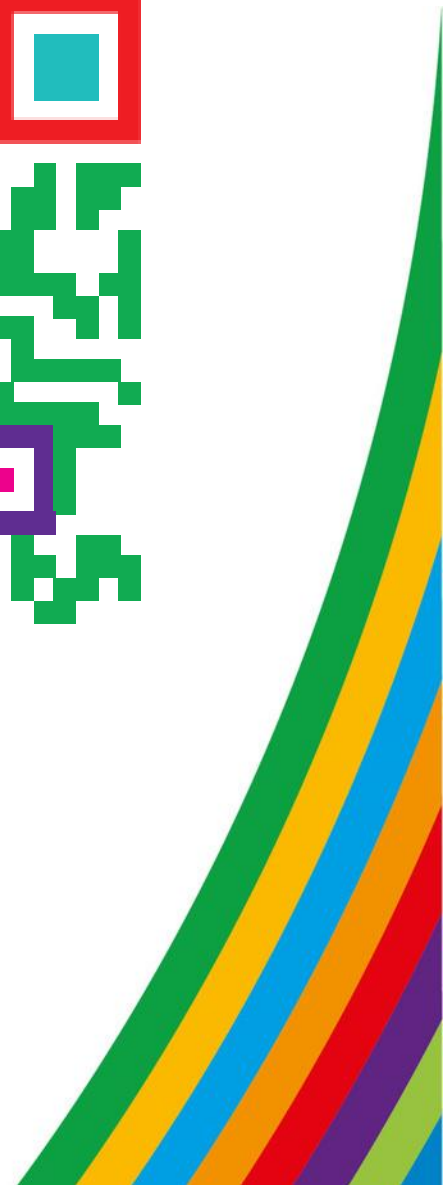
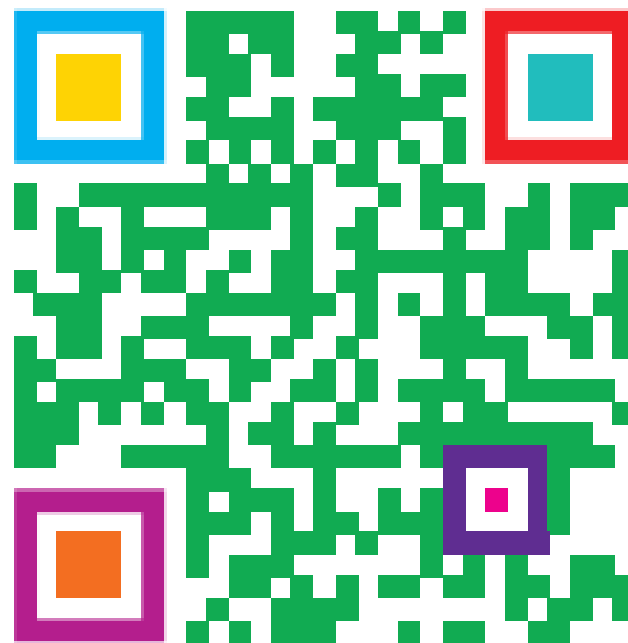
Music EnRICH

JOIN US FOR OUR OPEN EVENTS

Saturday 11th October 2025,
9.30am – 1.00pm

Monday 13th October 2025,
5.00 – 8.00pm

Wednesday 29th April 2026,
5.00 – 8.00pm.

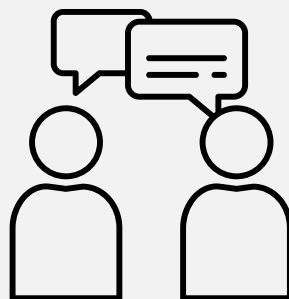


APPLYING

Apply online



A&G Meeting



Offer!



**What if they
change their mind?**

That's ok! There are opportunities to discuss changes with our team

**Can they apply to
multiple colleges?**

Yes!

This is their future, their choice, they can hold multiple offers

**Achieve more than
you thought possible!**



**RICHARD HUISH
COLLEGE**