



**Achieve | Belong | Participate**

# Welcome to Court Fields School



‘Education is the most powerful weapon  
which you can use to change the world’  
Nelson Mandela



**Achieve | Belong | Participate**



**Achieve | Belong | Participate**

# Our School



‘Court Fields is a happy and welcoming school. Pupils are positive about improvements to their school. They feel proud to attend. The majority of parents agree and say their child is flourishing at this school.’

‘Leaders are ambitious for pupils. They have created a culture where hard work is expected. Pupils enjoy good relationships with staff. Pupils are sensible and polite. Bullying is rare. If any incidents occur, pupils are confident that staff will resolve them quickly. Consequently, pupils feel safe.’



# Our School



'Pupils follow a broad and ambitious curriculum. Pupils with SEND receive the support they need to follow the curriculum successfully.'

'Pupils learn about beliefs and cultures different to their own, and say the school is inclusive and tolerant. Pupils receive effective support to plan their next steps in education or employment.'

'Pupils at the early stages of learning to read receive help to catch up. Leaders check that this has an impact on improving pupils' fluency and comprehension.'

'Leaders have created a strong culture of vigilance around safeguarding.'

'Pupils say that they feel safe and have a trusted adult in school.'





# Our School



At Court Fields, being part of the team means more than just teaching—it's about believing in every student's potential, participating fully in their journey, and creating a place where everyone belongs. The strength of our school lies in the relationships we build—with each other and with our students—and in the shared commitment to helping every young person thrive.

Staff Member



**Achieve | Belong | Participate**

# Our School



Thank you for all the care and support you have given my daughter and I over the time she has been at Court Fields. I am very proud of the confident young person she has become and her work ethic, success and great friends she has made. She is thriving and flourishing. I like the quote that " It takes a village to raise a child..." and am so grateful for how you have challenged her academically and supported her pastorally.

Year 10 Parent



# Where Next?



Responding to the Ofsted Areas for Improvement (AFIs)

- Assessment
- Resilience in learning

Continuing with our strategic plan

- Reading
- Attendance
- Disadvantaged gap

Working as part of our Trust (Blackdown Education Partnership)

- Clear, compassionate, ambitious leadership





# Overall Update



- Strong Ofsted 'Good' in all areas – keeping momentum
- 197 students in Year 7 for September 2025
- Full in all other Year Groups
- Fully staffed
- Selworthy partnership via The Cove
- 3G Pitch opened September 2024
- New Canteen/Hall/dedicated Performing Arts studio in progress, courts resurfacing - estimated completion late 2025
- Planning/resourcing for increasing numbers – additional Science Lab, 2 extra classrooms, SC preparing bid for additional expansion
- Focus on maintaining momentum with supported, staged growth



# In 5 Years Time

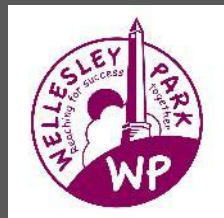


Achieve | Belong | Participate

# Our Community



National  
Trust



Somerset West  
and Taunton



Achieve | Belong | Participate

# Our Partnership



What we do



What you can  
expect/anticipate

How we  
support you



What we ask you to do

Achieve | Belong | Participate



# Home / School Partnership Agreement



## How to contact us:

Email is the best way to contact a member of staff at Court Fields School. In contacting the school, please remember that our staff are fully occupied in teaching, planning & preparing lessons, and supporting our students. Our staff are committed to responding to emails as quickly as possible. However, in order to maintain realistic workload and expectations, staff aim to reply to emails within 48 hours of receipt, Monday to Friday, during term time.

Please email your child's Tutor as first point of contact or see our website for guidance on who to contact via email. All school email addresses use the initialsurname@courtfelds.bep.ac format. Please check Class Charts for teacher initials if you are unsure.

If your query is urgent, before you phone the school on 01823 664201, please refer to the Contact page on our website in order to direct the call to the most appropriate person.

Our lines are open during term time from 8.15am to 4pm. For student absence please select Option 1 and leave a message.



## Agreement:

As partners, we commit to working together to support the education and wellbeing of our students, to be respectful and maintain regular communication, and to be part of our Court Fields School community. This agreement comes into place as an automatic part of the admissions process. Should you have any questions, please email your child's Head of Year using the initialsurname@courtfelds.bep.ac format.



## Help & Support:

As a school, we spend an average of 7 hours a day, Monday-Friday, with your child and can provide a range of help and support. We know that there may be times outside of these hours, or at weekends, when you may want to seek help or support for, or about, your child. Please see the range of support information on our website: [www.courtfelds.net/schoolguidance](https://www.courtfelds.net/schoolguidance)



## Home/School Partnership Agreement

At Court Fields we focus on our ethos to Achieve, Belong and Participate.

We know that by developing the skills and characteristics identified through our Court Fields Experience, our students will be more able to live happy and successful lives in the future.

This doesn't happen in isolation, and we know that by working as a team we can help our young people to be the best that they can be.

Thank you for being a part of our team.

Achieve | Belong | Participate

## Court Fields School

### What we will do:

- 1. Provide a Safe Environment:** We will ensure the school is a safe and welcoming place for all students, promoting respectful relationships between staff, students and parents.
- 2. Quality Education:** We will provide high-quality teaching and a broad curriculum to help every student succeed. This includes the formal subject curriculum and students' personal development via our Court Fields Experience.
- 3. Support:** We will provide support for students' individual needs, including academic, social, and emotional requirements. This may be through Tutors, Head of Year, the Hub, School Chaplain, Counsellors, SEN department, Senior Leadership Team, the Designated Safeguarding Lead, Attendance Officer or other internal or external support.
- 4. Work together to resolve issues:** We will ensure that we direct concerns to the right person and that they liaise, resolve and follow up with you. If you are not happy with the resolution, we will escalate appropriately to help ensure that you feel heard and supported.
- 5. Email & Class Charts:** We'll use email and Class Charts to send important updates/information. Please ensure we have your current email address and add us to your safe senders. Check your Spam folder regularly to avoid missing any information.
- 6. Social Media & School Website:** We will update our social media website regularly with news, events, and resources.
- 7. Parent/Teacher Meetings:** We will schedule meetings to discuss your child's progress and any concerns. This includes Tutor & Subject Evenings, as well as any additional meetings that we ask you to attend. We will continue to hold these as face-to-face meetings, as we know how important that personal communication is to our parents.
- 8. Newsletters:** We will send out newsletters with updates on school activities and important dates. Please read the Parent Bulletin each week as it will help keep us all informed of recent and forthcoming events in one easy place.
- 9. Phone Calls:** We may call you for urgent matters or to discuss specific issues regarding your child. Please ensure that we have at least 2 emergency contacts for your child, regularly updated, so we can get in touch when we need to.



## Home/School

### What we need parents to do:

- 1. Attendance:** Ensure your child attends school regularly and on time. You can check attendance on Class Charts quickly and easily. Even a couple of days absent each half term add up to a full two weeks missed over the year. This will impact your child's progress and their personal development.
- 2. Homework:** Encourage and support your child with their homework and other school learning activities, so that they complete what is set on time. You can check their homework on Class Charts. English & Maths are set weekly on the Spax platform, which your child can access from their school login online from a phone, tablet or computer.
- 3. Enrichment:** Encourage your child to take part in clubs and other activities that will help develop a range of skills outside the curriculum. Their personal development will benefit from activities in and outside school.
- 4. Communication:** Stay informed by reading school communications and attending Subject Evenings, Parents' Evening and other meetings. Keeping the school informed of any concerns you may have using your child's Tutor as your main point of contact.
- 5. Support:** Support the school's policies and encourage your child to follow our school rules. They are there to help young people develop the skills they will need at college, at work and in later life. Being in, on time, wearing the correct attire, being polite and following instructions are all vital and it's right that we all uphold these high expectations.
- 6. Sleep:** Research shows that many children do not get enough sleep, or that it is poor quality sleep, interrupted often by checking their phone. Please encourage good regular sleep routines and charge your child's phone at night away from their bedroom.
- 7. Mobile Phones:** The use of mobile phones is increasingly becoming a concern for us all. Your support in helping the school and your child manage these effectively will be essential. There is significant research on the negative impacts of smartphones on children and we would ask you to watch the recent Channel 4 documentary 'Swiped'. <https://www.channel4.com/programmes/swiped-the-school-the-banned-smartphone>



## Partnership Agreement

### What students must do:

- 1. Effort:** Always try your best in all school activities and homework.
- 2. Homework:** Complete the homework set, on time.
- 3. Respect:** Show respect to all adults in school, members of our local community, other students, and school property. Belong to others.
- 4. Behaviour:** Follow our school rules and behave responsibly at all times. If something goes wrong, own it and put it right.
- 5. Communication:** Talk to a teacher or parent if you have any problems or concerns. Check Class Charts daily for homework, rewards and detentions and to keep track on your attendance. Use Tootoot to raise any concerns quickly and easily.
- 6. Mobile Phones:** Must be off and away during the school day. This will support your concentration, mental health and learning.
- 7. Safeguarding:** Tell us if you're concerned about anything to do with yourself or others. Help keep everyone safe in our community by being part of our talking and listening school. Use the Tootoot app to anonymously report concerns or write statements if issues occur.

tootoot®



Achieve | Belong | Participate



# Curriculum



- Breadth – Full range of subjects
- Mastery Approach – Ensure knowledge is embedded
- Retrieve, Build, Progress



# Quality of Education



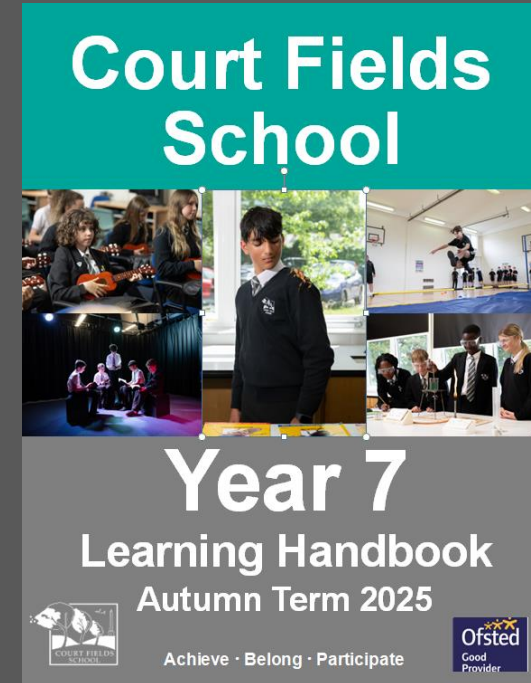
Learning does not happen unless students feel safe and secure, have positive, trusting relationships with the adults around them and perceive these adults as being fair.

Ensuring students have the emotional security to learn effectively will always come first in our school.

# Learning Handbook



- Guide to all of the essential knowledge and vocabulary for each subject
- Overview of homework as retrieval and to ensure retention
- Updated termly on the 'learning' pages of the website
- Full size knowledge organisers issued in class and also available on the subject pages of the website.



# Reading



- Support at all levels
- Weekly in tutor time
- Weekly in English
- Daily at home





# Mrs Westwood

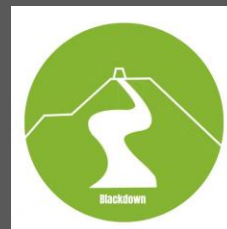
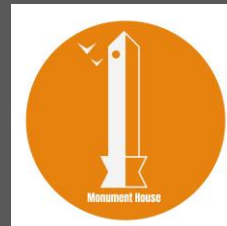
Assistant Headteacher,  
Personal Development & Safeguarding





# House System

- 3 Houses: Blackdown, Duke and Monument
- Links through from community
- Underpinning ABP
- Developed through the curriculum
- Part of our Court Fields Experience



# Our Court Fields Experience



## THE COURT FIELDS EXPERIENCE

Developing our Court Fields students for their successful futures



**Achieve.  
Belong.  
Participate.**

**E**QUALITY, DIVERSITY & INCLUSION (EDI)  
**E**XTRA-CURRICULAR  
**P**ERSONAL, SOCIAL, HEALTH, CITIZENSHIP  
& ECONOMIC EDUCATION (PSHCE)  
**C**HARACTER  
**R**ELATIONSHIPS & SEX EDUCATION (RSE)  
**I**NFORMATION, ADVICE & GUIDANCE (CIAG)  
**B**RITISH VALU  
**E**S  
**C**ITIZENSHIP  
**S**Ocial, MORAL, SPIRITUAL & **C**ULTURAL EDUCATION (SMSC)  
**E**NRICHMENT

|                           |                                     |                           |                           |                           |                             |
|---------------------------|-------------------------------------|---------------------------|---------------------------|---------------------------|-----------------------------|
| <b>ACHIEVE</b><br>(A)     | I achieve because I am              | Anticipation<br>Achieve   | Innovation<br>Achieve     | Proactive<br>Achieve      | Resilience<br>Achieve       |
| <b>BELONG</b><br>(B)      | I belong because I have             | Confidence<br>Belong      | Empathy<br>Belong         | Resilience<br>Belong      | Leadership Skills<br>Belong |
| <b>PARTICIPATE</b><br>(P) | I participate because I demonstrate | Initiative<br>Participate | Leadership<br>Participate | Resilience<br>Participate | Teamwork<br>Participate     |

**Achieve | Belong | Participate**

# CF Characteristics



## Characteristics of Court Fields Students

The characteristics that we develop in our students, so that they leave us equipped for success in their future, are supported by our Court Fields Experience. They enable our students to Achieve, Belong and Participate.



I achieve because I am:

☒ Ambitious   ☒ Inquisitive   ☒ Reflective   ☒ Resilient



I belong because I have:

☒ Courage   ☒ Empathy   ☒ Integrity   ☒ Listening Skills



I participate because I demonstrate:

☒ Initiative   ☒ Leadership   ☒ Motivation   ☒ Teamwork

Achieve | Belong | Participate

# Team Around Your Child



- \* Senior Leadership Team
- \* SENCO
- \* Head of Year
- \* Tutors
- \* Teachers
- \* TAs
- \* Pastoral Team



# Communication & Support



- The Wellbeing Hub – day to day student enquiries. First Aid. Issues outside the classroom.
- Class Charts – Behaviour & Homework
- Tootoot
- Planners
- Homework Club
- Cashless Catering
- Parent Bulletin
- Student reports twice a year
- Website – Twitter – Facebook - Instagram





# Who to Contact



Your first point of contact is the Tutor

We have a 48-hour response time

There will be a chance to meet with Tutors early on in the Autumn Term

Website – [www.courtfields.net](http://www.courtfields.net)

Reporting bullying/safeguarding – Tootoot via the website/App

School Email – [schooloffice@courtfields.bep.ac](mailto:schooloffice@courtfields.bep.ac)

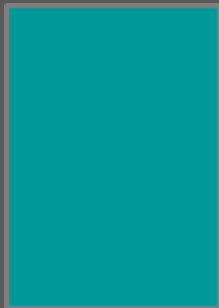


# Miss Samuel

## Head of Year 7

Assistant Head of Year 7  
Mr Bethell

# Our Year 7 Team



Miss Samuel (HOY)

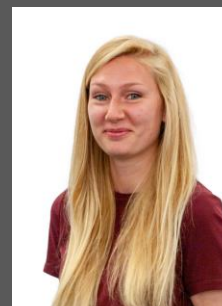
Miss Clark

Ms Dudal

Mr Bethell

Mr Bailey

Miss Martyn



Mrs Dwyer

Miss Brown

Miss Atherton

Mrs Purdy

Miss Casson

**Achieve | Belong | Participate**

# The School Day



8.00am - Free breakfast available for all students

8.35am – Warning Bell

8.40am – Tutor Time

9.15am – Lesson 1

10.15am – Lesson 2

11.15am – Break

11.35am – Lesson 3

12.35pm – Lesson 4

1.35pm – Lunch

2.10pm – Warning Bell

2.15pm – Lesson 5

3.15pm – Home Time

3.15 to 4.30pm – Homework Club available to all students



**Achieve | Belong | Participate**

# Attendance



- Court Fields has high expectations for attendance. We are beating national trends but we look for 96% or more.
- You must report any absence to the school via the Absence Line on the first day of absence.
- No term time holiday will be agreed in line with Local Authority policy.
- Student rewards for whole and part year attendance, most improved, short term attendance targets etc.



# Tutor Programme



Each morning Year 7s will meet with their tutors. During this time the following programme happens:

- Weekly assemblies
- Mentoring from their tutor
- Uniform and equipment checks
- Tutor competitions
- Developing life skills
- How to be a successful learner
- Revision skills
- Careers advice and guidance
- Wellbeing



# Enrichment



Get involved – so many clubs on offer (from bug club to badminton!)

Student Leadership:

Transition Leaders

Tutor Captains

Sports Captains

Tutor Leadership Roles



# Sample Extra Curricular Programme



| Monday                | Tuesday                                      | Wednesday                    | Thursday             | Friday                    |
|-----------------------|----------------------------------------------|------------------------------|----------------------|---------------------------|
| Year 7/8 Futsal       | Year 9/10 Girls' Basketball                  | Year 7/8 Girls Futsal        | Year 9/10 Futsal     | Year 7/8 Girls Basketball |
| All Years Badminton   | Year 7/8 Girls' Football                     | Year 7 Rugby                 | KS3 Dodgeball        | Staff and Year 11 Futsal  |
| Year 10/11 Basketball | Year 9/10 Girls' Football                    | Year 8 Rugby                 | Art Club             | Year 9/10 Girls' Futsal   |
| All Years #GirlPower  | Christian Union                              | Year 9 Rugby                 | Choir                | Historical Fiction club   |
| Chess Club            | Music Practice Rooms                         | All Years Badminton Fixtures | Music Practice Rooms | Bug Club                  |
| e-Chess Club          | LRC Drop-in                                  | CF Dance                     | LRC Drop-in          | Eco Club                  |
| Music Practice Rooms  | Whole School Production Rehearsals (from HT) | Humanities homework club     |                      | Drama Club                |
| LRC Drop-in           |                                              | Music Practice Rooms         |                      | Gardening Club            |
|                       |                                              |                              |                      | Music Practice Rooms      |

# Music Lessons



Do you know how positively learning a musical instrument impacts your brain? Results show positive effects on learning, memory, fine motor skills, verbal non-verbal reasoning, creating more capable, resilient young people.

We offer a full range of 1:1 and small group Peripatetic lessons.

We are also offering 3 free taster lessons for all FSM students in Year 7 from September. Simply sign up with your options in your music lessons and your time will be given to you.

Non-FSM students we offer a heavily discounted rate and again simply sign up via Mr Whiteoak

We offer both group and 1:1 lessons. All trial lessons will be at a cost of £5 and will be small groups



# Y7 Residential



A fantastic opportunity to build a sense of belonging for our students and spend time as a year group with Tutors and Head of Year.

## Ultimate Adventure Centre – Bideford

24<sup>th</sup> – 26<sup>th</sup> September 2025

Surfing lesson/Coasteering on Croyde Beach.

Ultimate assault course (similar to the 'Total Wipeout' course)

High/Low ropes

Paddle Boarding & Kayaking

Orienteering & Camp Craft

Full board and evening activities



# Rights Respect School Award



Achieve | Belong | Participate



# UNCRC- the platform of a RRS



- Rights Respecting Schools put the **United Nations Convention** of the Rights of the Child at the **heart** of everything they do.
- This is a document of **54 rights** that every young person under the age of 18 is entitled to.
- It is the most complete statement of **children's rights** ever produced and is the most widely-ratified international human rights treaty in history



# General Principles

- There are four articles in the convention that are seen as special. They're known as the “**General Principles**”. They are:



- **Non-discrimination** (article 2)
- **Best interest of the child** (article 3)
- **Right to life survival and development** (article 6)
- **Right to be heard** (article 12)

# Why are we doing this?



- A need a **framework** to aid our work with young people. That golden thread which brings all our work together.
- Being a Rights Respecting School is about more than just 'doing the Award'. It's about becoming a **rights-based community** in which children are **valued** and can **thrive**.
- There are **four** key areas of impact for children at a Rights Respecting school; **wellbeing, participation, relationships and self-esteem**.
- The difference that a Rights Respecting School makes goes beyond the school gates, making a positive impact on the whole community.

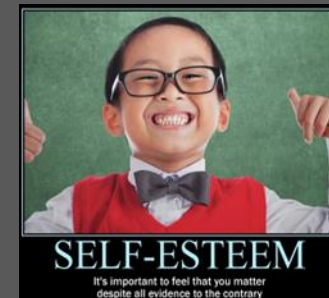
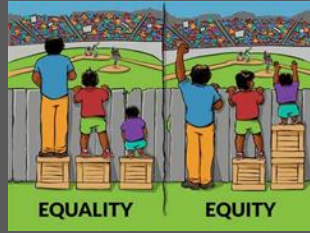
# Benefits



- Pupils develop a long-term commitment to **values** such as social justice and inclusion.
- There is a **reduction in bullying and discriminatory** behaviour among students.
- Pupils enjoy and feel **safe** at school.
- Pupils feel included and **valued**.
- Pupils' **wellbeing** and emotional **resilience** is improved.
- Pupils' engagement in the school and their own **learning is improved**.
- Pupils' **attainment is improved**, and the attainment gap between disadvantaged and non-disadvantaged pupils is narrowed.
- Pupils are more **engaged** in their **local** and **global** communities as 'active citizens'.

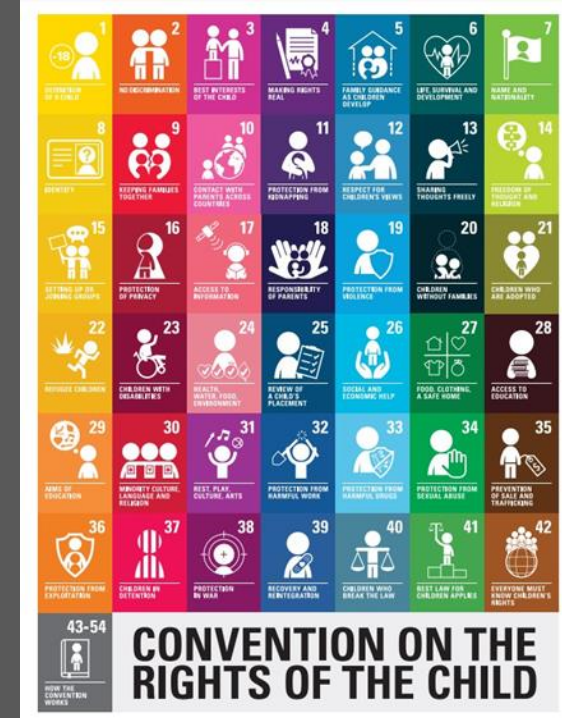
# The Language of Change

- Equality
- Equity
- Dignity
- Respect
- Non-discrimination
- Participation
- Developing full potential
- Well-being
- Relationships
- Self-esteem



# What do you need to know?

- You need to be able to explain to your children is they have 54 Human Rights which adults must uphold and protect.
- Children's Human Rights are called 'The Convention of the Rights of the Child.'
- As duty barriers it is our legal responsibility to put these into place to help our children become successful.







# Mrs Westwood

Assistant Headteacher,  
Personal Development & Safeguarding

# Mobile Phones



- Following student, parent and staff voice and a large amount of research, Year 7s, 8s, 9s and 10s will not be permitted to use mobile phones in school.
- They can bring their phone to school, once they enter the site it will be switched off and in their bag.
- The school office and home can contact home for students as required.



# Mobile Phones



## Our own research from PSHCE sessions:

### Year 7-8

- All except one child own a mobile phone
- Approximately 4 per Tutor Group have their phone charged downstairs at night, all other children have access in their room all night
- 90% have a personal account with Instagram, WhatsApp and TikTok
- Approximately 60% will look at their phone past 11pm
- Approximately 33% will look at their phone past midnight (even on silent)
- Approximately 15% agreed they were tired in the morning (in Y10 this grows to 50%)

# Family Smart Start



**We will be working with the UK Safer Internet Centre and South West Grid for Learning on an exciting new project 'Family Smart Start'**

The project is a guided experience that provides parents and carers with practical tools, expert advice, and accessible resources to help them set up a phone safely and have meaningful conversations with their child about responsible digital use. It responds directly to rising parental concerns about online safety, screen time, and social pressures associated with smartphone use, particularly at the point of transition to secondary school.

We will be contacting parents in the next few weeks to take part in this project.



**Achieve | Belong | Participate**

# Uniform



We have been pleased to receive positive feedback on our students uniform over the last 4 years, but we are clear that there are a minority of students who are not consistently meeting our expectations for smart uniform. We therefore, and in response to parent/student feedback, made some clarifications for September 2023. Thank you as always for your support.

As for this year, the Court Fields tie is available on Scopay online or from the School Office. The price from September will be £4.25.

House Badges must be worn on the blazer lapel for Years 7-10 and on the tie or jumper for Year 11. Your child's first house badge is available from school, replacements are £1 each and available on Scopay or from the School Office.

# Uniform - Sept 2025



**Achieve | Belong | Participate**



# Uniform



Shoes can be either leather/leather-look formal school shoes or trainers. Suede, canvas or converse-style rubber toe cap shoes, or material trainers are not allowed.

Trainers with coloured logos are not allowed. Students are not allowed to wear boots or block-heeled shoes.

Silver tags must be removed from Nike Air Force shoes for school.



# Uniform



Blazers must be worn by students in Years 7-10 at all times unless in a classroom, actively playing sport at break/lunch, or when the Headteacher has directed that the weather is too hot for blazers.

Coats should be dark-coloured or hi-viz/reflective if appropriate for walking/cycling and waterproof/windproof. Fleecy fashion coats are not appropriate. Denim or leather jackets are not acceptable for school.

Jumpers are optional.

Bags should be practical and appropriate for school (no handbags!).

# Uniform



## Trousers

There will be a range of trousers available from SouthWest Schoolwear and Workwear Online as follows:

[www.swschoolwear.co.uk/shop/pcategory/schoolwear/court-fields-school/](http://www.swschoolwear.co.uk/shop/pcategory/schoolwear/court-fields-school/)  
[www.workwearonline ltd.com](http://www.workwearonline ltd.com)

Trousers are also available from other retailers.

All students are permitted to wear trousers, however they must be black and tailored. Students may also wear black, knee-length, tailored shorts between Easter and October Half Term.

*Trousers that are NOT acceptable: Jeans, chinos, leggings, jeggings, joggers, ultra skinny fit.*

# Uniform

## Skirts



Following consultation and feedback from students and parents we have allowed one type of school skirt from September 2023. This is available from SouthWest Schoolwear and Workwear Online as follows, and from a range of supermarket/high street stores (see links online):

[www.swschoolwear.co.uk/shop/pcategory/schoolwear/court-fields-school/](http://www.swschoolwear.co.uk/shop/pcategory/schoolwear/court-fields-school/)  
[www.workwearonline ltd.com](http://www.workwearonline ltd.com)

If students prefer, they are permitted to wear trousers instead of the school skirt, however the trousers must be black and tailored.

No other type of skirt will be accepted for school. Jersey skirts or trousers are not allowed. Skirts should be an appropriate length - we appreciate all parents' support on this.

We would like to thank parents for their support and feedback, which has clearly led us to adopt this single school skirt in response to their comments.

# PE Footwear



3G All Weather Sports Pitch  
Footwear – Studs (moulded), Plastic  
Studs/Screw in (less than 15mm),  
Blades or boots with metal or metal  
tipped studs (less than 15mm) and Astro  
Turf Trainers are the only permitted  
footwear for use on the 3G pitch

No flat soled trainers e.g. Indoor or  
running trainers will be permitted for use  
on the 3G pitch (including Air Force  
Ones)

**Please DO**

- Wear clean sports shoes
- Keep drinks in plastic containers only
- Keep surface free from debris
- Close all gates during play
- Report any damage immediately to booking office
- Ensure goals and posts are secure before playing
- Enjoy

Sports Facility  
Constructed By

 **S&C SLATTER**  
TRUSTED SOLUTIONS FOR  
SPORT, LEISURE & EDUCATION

&

 **FieldTurf®**  
A Tarkett Sports Company

Join the winning team | fieldturf.com | s&cslatter.com  
Call 01625 34021

**Please DO NOT**

- Smoke on the pitch
- Eat on the pitch
- Drop litter
- Chew gum on the pitch
- Allow dogs or bikes on the pitch
- Allow spectators on the pitch
- Drag goals or heavy items across the surface

### ACCEPTABLE FOOTWEAR FOR 3G FOOTBALL PITCH

| YES ✓                                                                                                                                                                                                                         | YES ✓                                                                               | YES ✓                                                                               | YES ✓                                                                               | NO ✗                                                                                |
|-------------------------------------------------------------------------------------------------------------------------------------------------------------------------------------------------------------------------------|-------------------------------------------------------------------------------------|-------------------------------------------------------------------------------------|-------------------------------------------------------------------------------------|-------------------------------------------------------------------------------------|
| Studs (moulded)                                                                                                                                                                                                               | Plastic Studs / Screw In<br>(screw in less than 15mm)                               | Blades or Boots with metal<br>or metal tipped studs<br>(less than 15mm)             | Astro Turf Trainers                                                                 | Flat Soled<br>eg. Indoor or Running<br>Trainers                                     |
|                                                                                                                                             |  |  |  |  |
| Please make sure your boots are clean and studs are in good condition before going onto the pitch. Anyone with inappropriate or muddy footwear will be asked to leave the pitch as it damages the playing surface. Thank You. |                                                                                     |                                                                                     |                                                                                     |                                                                                     |

# Over the Summer



Don't leave any worries until September. Speak to us.

Reading

Have Fun!

At Court Fields – Be the Best You Can Be!

#BeKind



# First Day at CFS



Wednesday 3<sup>rd</sup> September @ 8.35am  
Year 7 & 11 only

**We are looking forward to  
working with you**



**Achieve | Belong | Participate**